



SP FAIR 12
Design by Manuel Vivian

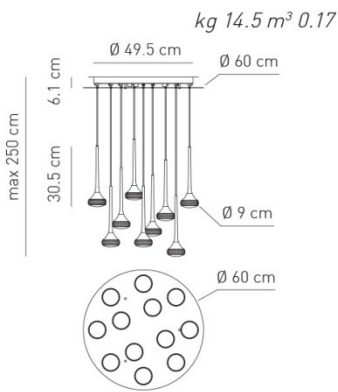
Collection consisting of recessed downlights, wall lamps, ceiling lamps and suspended lamps with chromed metal frame and glass diffuser. Available in several colours and sizes. Built-in (dimmable for some versions) LED light source.

Typology: Suspended

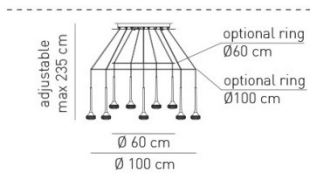
Ratings

- Built in **LED** module
- CCT 2700 K
- Diffused light
- Surface installation over holes
- Supply voltage ~220-240V
- Switch mode: on-off
- Dimmable 1-10V LED driver
- Steel frame

Product code composition
FAIRY / DRIVER INCLUDED

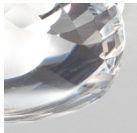


| Type | Article | Colours | Finish | Source |
|------|---------|------------|-------------------|--|
| SP | FAIR 12 | CS crystal | CR white + chrome | LED 12 x 5.9W diffused beam - 2700K |
| | | AM amber | | |
| | | GR grey | | |



IP20 CRI90 **LED** 12 x ~717 lm ~121 lm/W 110-240Vac
 example composition code SP FAIR12 CS NI LED

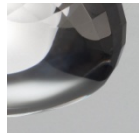
Available colors



CS
Crystal



AM
Amber



GR
Grey



CR
Chrome

SPFAIR12 _ _ _ _ LED

CUSTOMER _____ NOTES _____

NOTICE:
Luminous flux (lm) and efficacy (lm/W) for all built in LED luminaires is based on nominal ratings of the LED sources.
Technical data could be subject to alteration without notice. Axo Light does not provide legal guarantee for the accuracy of this data sheet.